

IS32PM3420A DEMO BOARD GUIDE

DESCRIPTION

The IS32PM3420A regulator is a fully integrated and high frequency synchronous step-down DC-DC converter that can drive a load current of up to 3A. It can operate within an input voltage range of 3.8V to 36V. The IS32PM3420A provides exceptional efficiency, output accuracy and drop-out voltage in a very small solution size. Constant on-time control mode is employed to achieve simple control-loop compensation and fast transient response. Force Continuous Conduction Mode (FCCM) at light loads significantly reduces the output voltage ripple. It requires few external components. Pin arrangement allows simple, optimum PCB layout. Protection features include thermal shutdown, VDD under-voltage lockout, cycle-by-cycle current limit, over-voltage and output short-circuit protection.

The IS32PM3420A device is available in the SOP-8-EP package with an exposed pad for enhanced thermal dissipation.

FEATURES

- Input voltage range from 3.8V to 36V
- 1 μ A (Typ.) shutdown current
- Up to 3A output current capability
- Adjustable output voltage, 1V to 24V
- Output regulation accuracy:
 - $\pm 1\%$ at 25 $^{\circ}$ C
 - $\pm 2\%$ over -40 $^{\circ}$ C ~150 $^{\circ}$ C
- 91% efficiency at full load (5V/3A)
- Integrated synchronous rectifier
- Fixed operating frequency: 400kHz
- Force Continuous Conduction Mode (FCCM)
- Spread spectrum to minimize EMI
- Few external components
 - Internal loop compensation
 - Internal soft-start
- Power good flag output
- Fault protections
 - Cycle by cycle current limit
 - Precision enable to program system UVLO
 - Output short-circuit protection with hiccup mode
 - Output over-voltage protection
 - VDD under-voltage lockout
 - Thermal shutdown protection
- Operating junction temperature range from -40 $^{\circ}$ C ~ +150 $^{\circ}$ C
- SOP-8-EP compact package
- RoHS & Halogen-Free Compliance
- TSCA Compliance
- AEC-Q100 Qualified with Temperature Grade 1: -40 $^{\circ}$ C to 125 $^{\circ}$ C

QUICK START

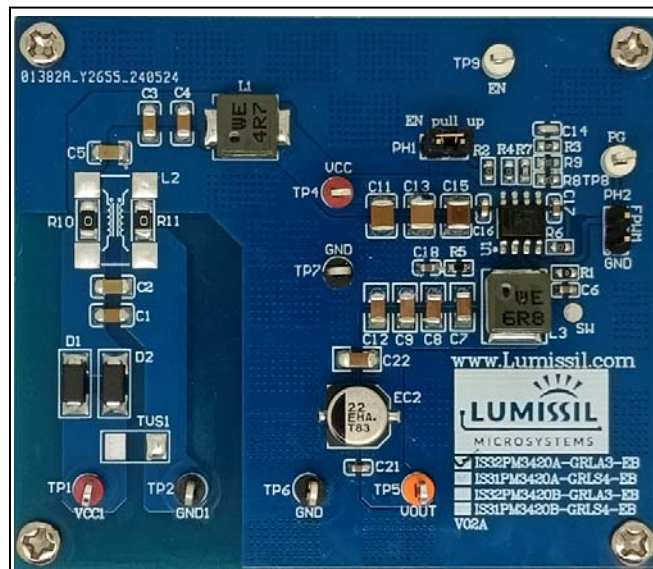


Figure 1 Photo of IS32PM3420A Evaluation Board

APPLICATIONS

- General-purpose power supply
- Automotive LED lighting system
- Automotive body electronics

DEMO INFORMATION

- Input: 9V~16VDC
- Output: 5V/0~3A

Note: If the output voltage set by the demo board is not what you want, you can change the output voltage you want through the design method described below.

ABSOLUTE MAXIMUM RATINGS

- Input voltage ≤ 36 VDC

Caution: Do not exceed the conditions listed above, otherwise the board will be damaged.

PROCEDURE

The IS32PM3420A DEMO Board is fully assembled and tested. Follow the steps listed below to verify board operation.

Caution: Do not turn on the power supply until all connections are completed.

- 1) Connect the positive terminal of the power supply to the VCC1 of the board and the negative terminal of the power supply to the GND1 of the board.
- 2) Connect the electronic load (or adjustable resistor load) to the VOUT terminal and GND terminal of board.
- 3) Connect the PH1 to pull up EN pin, the chip will be enabled.

IS32PM3420A DEMO BOARD GUIDE

- 4) The PG terminal on the board is an output voltage error reporting function, which is pulled up to VDD by a resistor during normal operation. Once the output voltage is below $93\% \times V_{OUT}$ or $107\% V_{OUT}$ high, the PG will be pulled down.

ORDER INFORMATION

Part No.	Temperature Range	Package
IS32PM3420A-GRLA3-EB	-40°C to +125°C (Automotive)	SOP-8-EP, Lead-free

Table 1 Ordering Information

For pricing, delivery, and ordering information, please contacts Lumissil's analog marketing team at analog@lumissil.com or (408) 969-6600.

DESIGN INFORMATION

SETTING THE OUTPUT VOLTAGE

The external resistor divider, R_{FBT} and R_{FBB} , is used to set the output voltage (As shown in Figure 2), according to the following equation:

$$V_{OUT} = \frac{(R_{FBB} + R_{FBT})}{R_{FBB}} \times V_{FB_TH} \quad (1)$$

Where $V_{FB_TH} = 1V$ (Typ.).

Choosing a value for the resistor R_{FBB} should be reasonable. Usually, a small R_{FBB} leads to considerable quiescent current loss, while a large R_{FBB} makes the FB pin noise-sensitive and voltage errors from the V_{FB} input current are noticeable.

In order to have an accurate output voltage, precision resistors are preferred ($\pm 1\%$ recommended). The R_{FBT} and R_{FBB} resistors should be placed as close as possible to the IS32PM3420A with minimal trace length to the FB and AGND pins.

In addition, it should be noted that the resistor R_T and capacitor C_{FF} are required. The R_T is fixed at $1k\Omega$,

while the C_{FF} is fixed at $33pF$.

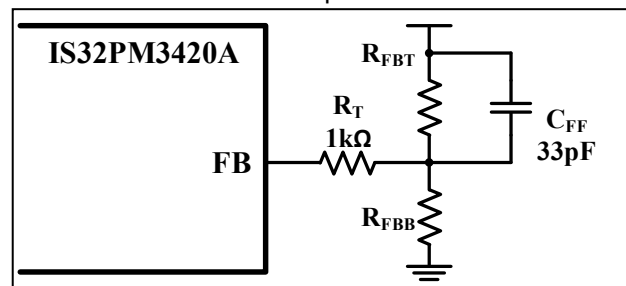


Figure 2 Feedback Network

Table 1 R_{FB} Resistance Versus Output Voltage

$V_{OUT}(V)$	$R_{FBB}(k\Omega)$	$R_{FBT}(k\Omega)$
3.3	43.5	100
5	25	100
8	14.3	100

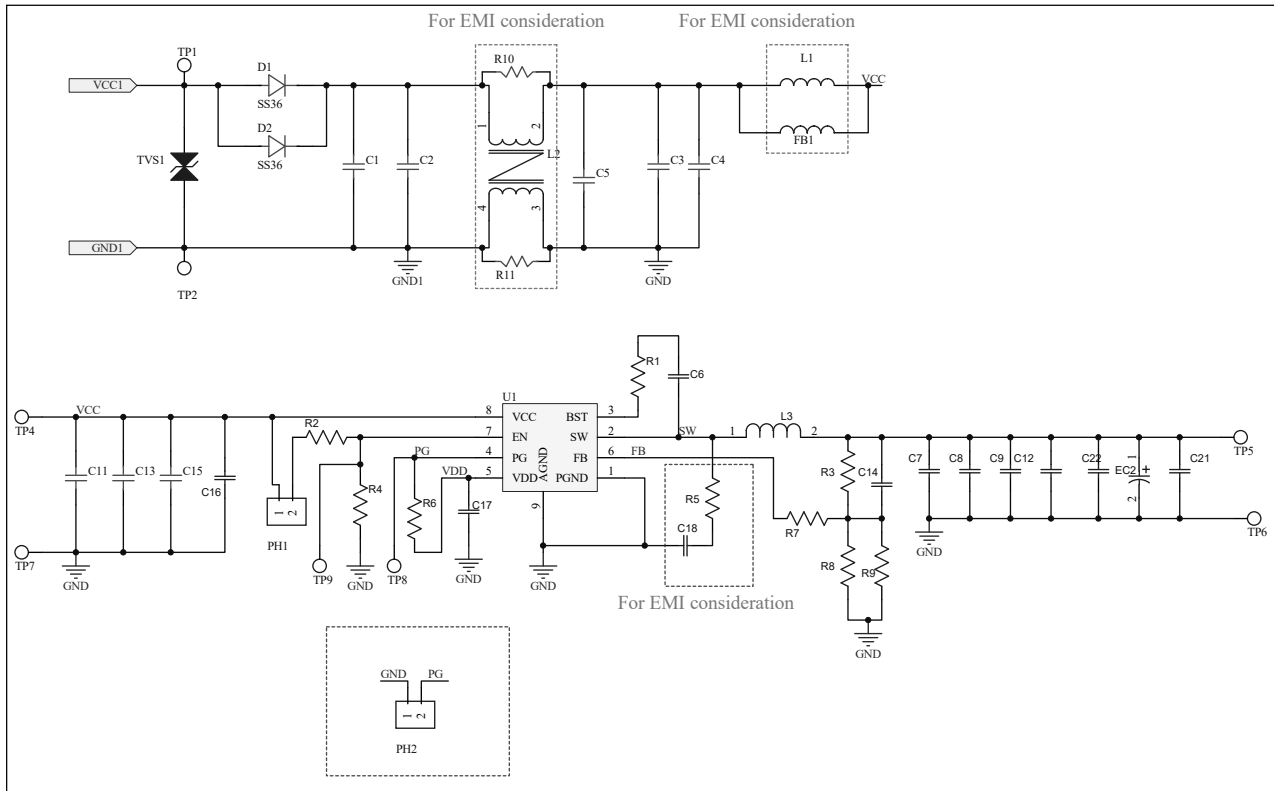


Figure 3 IS32PM3420A Demo Board Schematic

IS32PM3420A DEMO BOARD GUIDE

BILL OF MATERIALS

Name	Symbol	Description	Qty	Supplier	Part No.
IC	U1	Constant voltage chip	1	Lumissil	IS32PM3420A-GRLA3-TR
Capacitor	C1, C3, C4	CAP,2.2 μ F,50V, \pm 10%, SMD	3	Yageo	CC1206KKX7R9BB225
Capacitor	C2, C5	CAP,100nF,50V, \pm 10%, SMD	2	Yageo	CC1206KRX7R9BB104
Capacitor	C11, C13	CAP,10 μ F,50V, \pm 10%, SMD	2	Yageo	CC1210KKX7R9BB106
Capacitor	C15	CAP,4.7 μ F,50V, \pm 10%, SMD	1	Yageo	CC1210KKX7R9BB475
Capacitor	C6, C16, C21	CAP,0.1 μ F,50V, \pm 10%, SMD	3	Yageo	CC0603KRX7R9BB104
Capacitor	C17	CAP,1 μ F,16V, \pm 10%, SMD	1	Yageo	CC0603KRX7R7BB105
Capacitor	C18	CAP,1nF,50V, \pm 10%, SMD	1	Yageo	CC0603KRX7R9BB102
Capacitor	C14	CAP,33pF,25V, \pm 10%, SMD	1	Yageo	CC0603JRNPO8BN330
Capacitor	C7, C8, C9, C12, C22	CAP,10 μ F,25V, \pm 10%, SMD	5	Yageo	CC1206KKX5R9BB106
Resistor	R2, R4, R6	RES,47k,1/10W, \pm 5%, SMD	3	Yageo	RC0603JR-0747KL
Resistor	R1	RES,0R,1/10W, \pm 5%, SMD	1	Yageo	RC0603JR-070RL
Resistor	R5	RES,2R,1/10W, \pm 5%, SMD	1	Yageo	RC0603JR-072RL
Resistor	R7	RES,1k,1/10W, \pm 1%, SMD	1	Yageo	RC0603FR-071KL
Resistor	R8	RES,47k,1/10W, \pm 1%, SMD	1	Yageo	RC0603FR-0747KL
Resistor	R9	RES,51k,1/10W, \pm 1%, SMD	1	Yageo	RC0603FR-0751KL
Resistor	R10, R11	RES,0R, 1/4W, \pm 1%, SMD	2	Yageo	RC1206FR-070RL
Resistor	R3	RES,100k,1/10W, \pm 1%, SMD	1	Yageo	RC0603FR-07100KL
Diode	D1, D2	3A,60V, SMA	2	Diodes	SS36
SMD Inductor	L1	4.7 μ H \pm 20%, Isat=5.9A	1	Würth	74437336047
SMD Inductor	L2	NC			
Headers	PH1, PH2	2 pin Headers 2.54mm	2		
Terminal	VCC1, GND1, VCC, GND \times 2, VOUT, EN, PG		8		
SMD Inductor	L3	6.8 μ H \pm 20%, Isat=5.65A,10% SMD	1	Würth	78439346068
Capacitor	EC2	E-CAP,22 μ F,25V, \pm 10%, SMD	1	Panasonic	EEEHA1E220P
SMD Magnetic Bead	FB1	NC			
SMD TVS	TVS1	NC			

Note: Bill of materials refers to Figure 3 above.

IS32PM3420A DEMO BOARD GUIDE

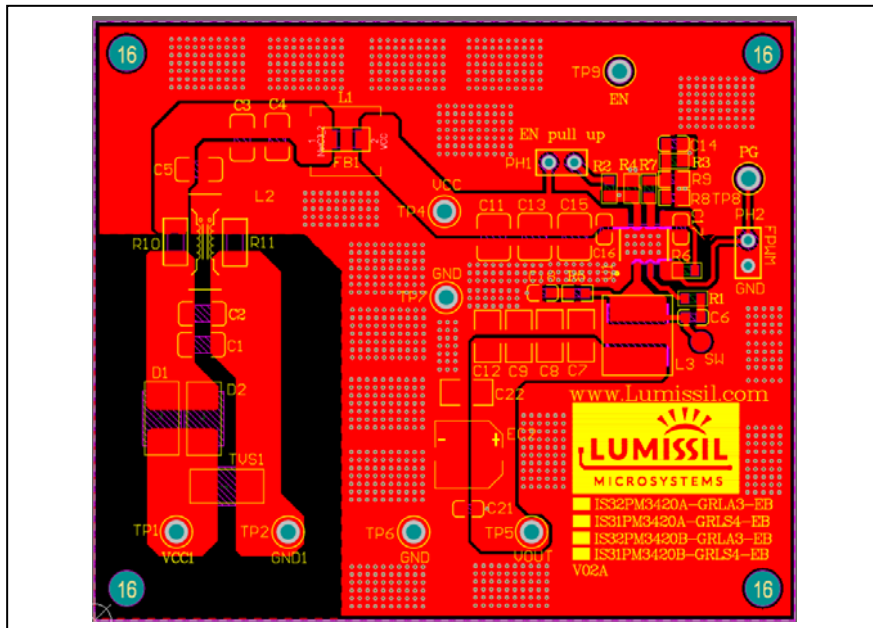


Figure 4 Board PCB Layout - Top Layer

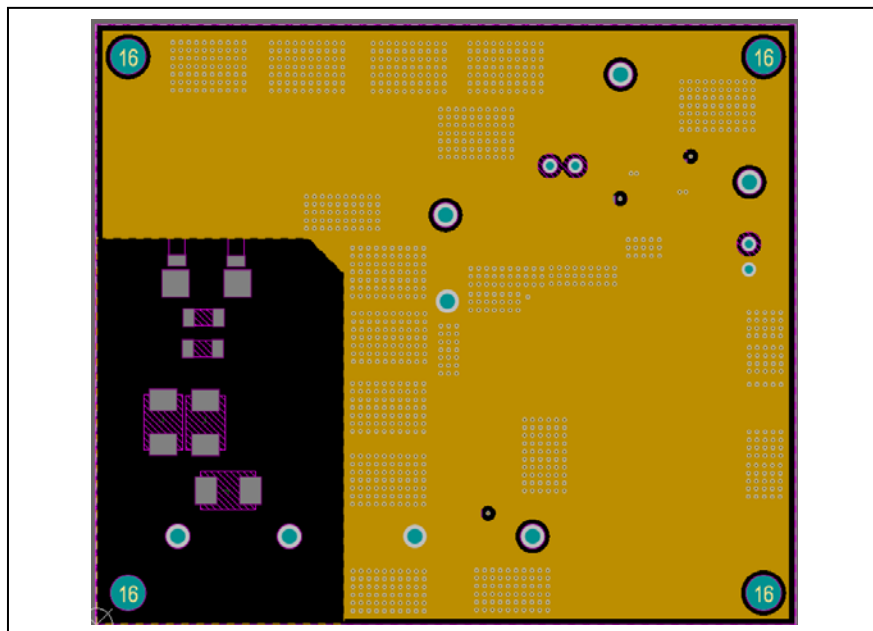


Figure 5 Board PCB Layout - Mid-Layer 1

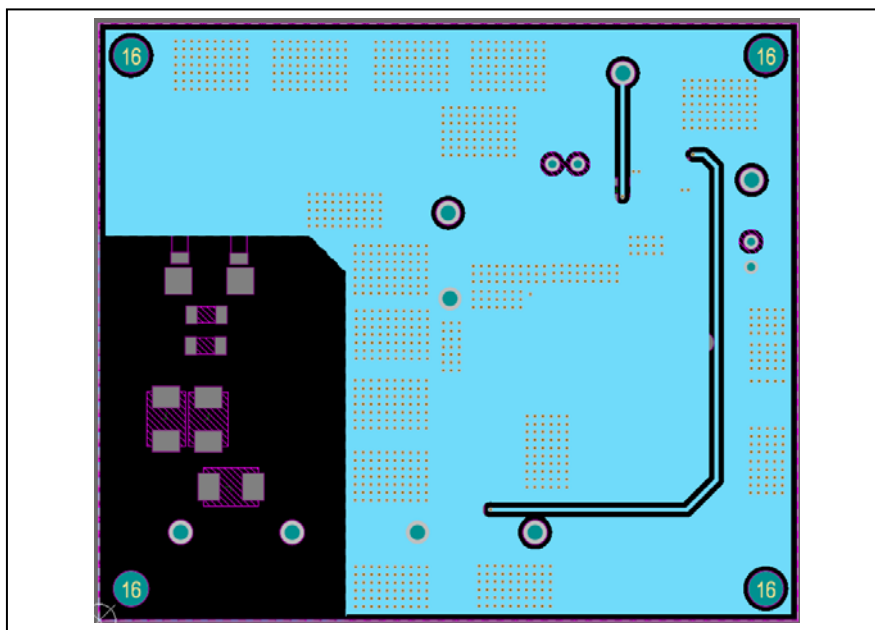


Figure 6 Board PCB Layout - Mid-Layer 2

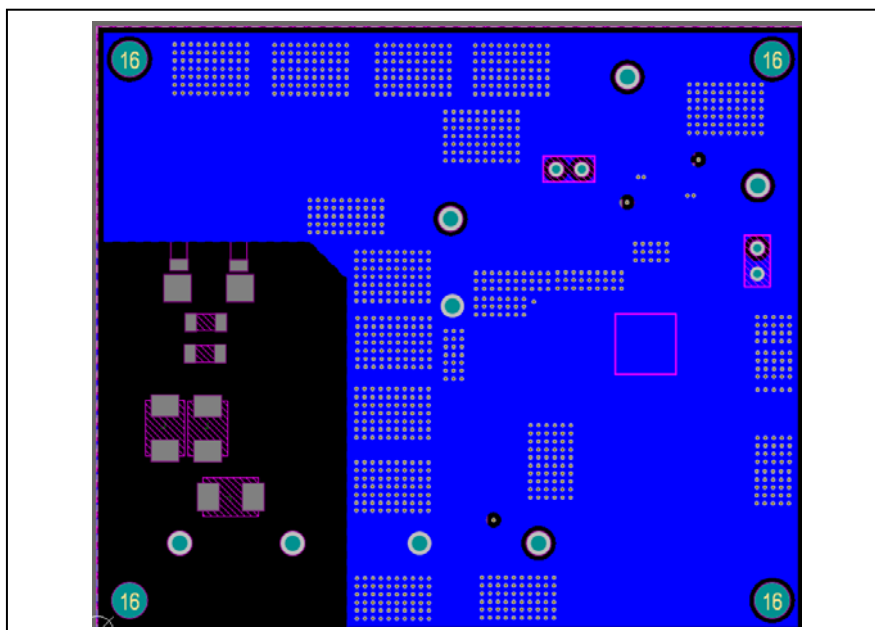


Figure 7 Board PCB Layout - Bottom Layer

CONDUCTED EMI PERFORMANCE

Test condition: $V_{CC}=12V$, $V_{OUT}=5V$, $I_{OUT}=3A$, $f_{SW}=400kHz$, naked board without any shielding.

Test standard: CISPR-25 Class 5 conducted EMI (Blue: Peak scanning, Red: Average scanning).

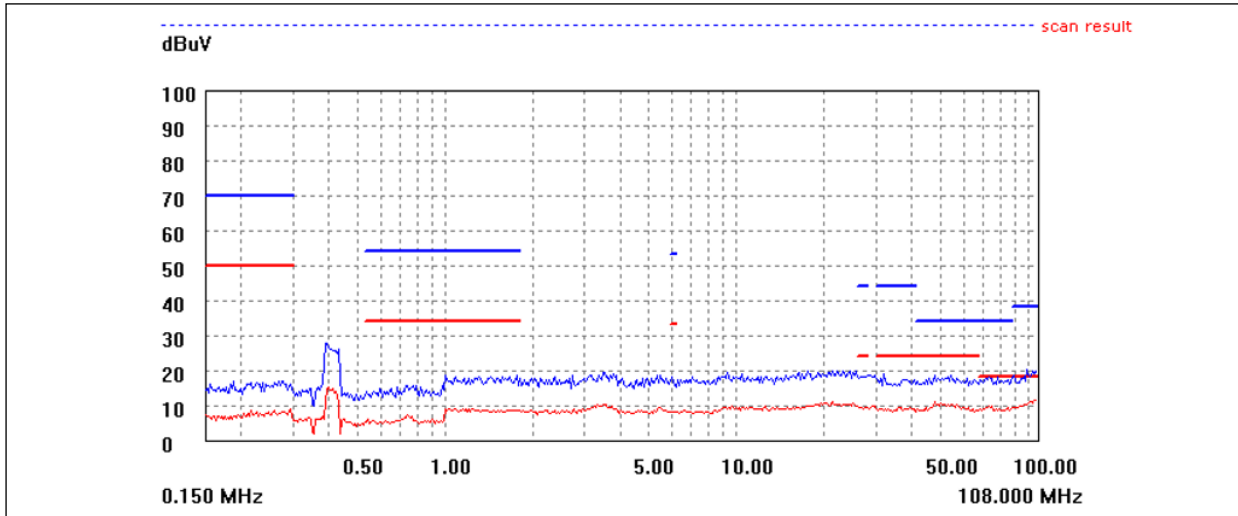


Figure 8 CISPR-25 Class 5 Conducted EMI Scan (VCC)

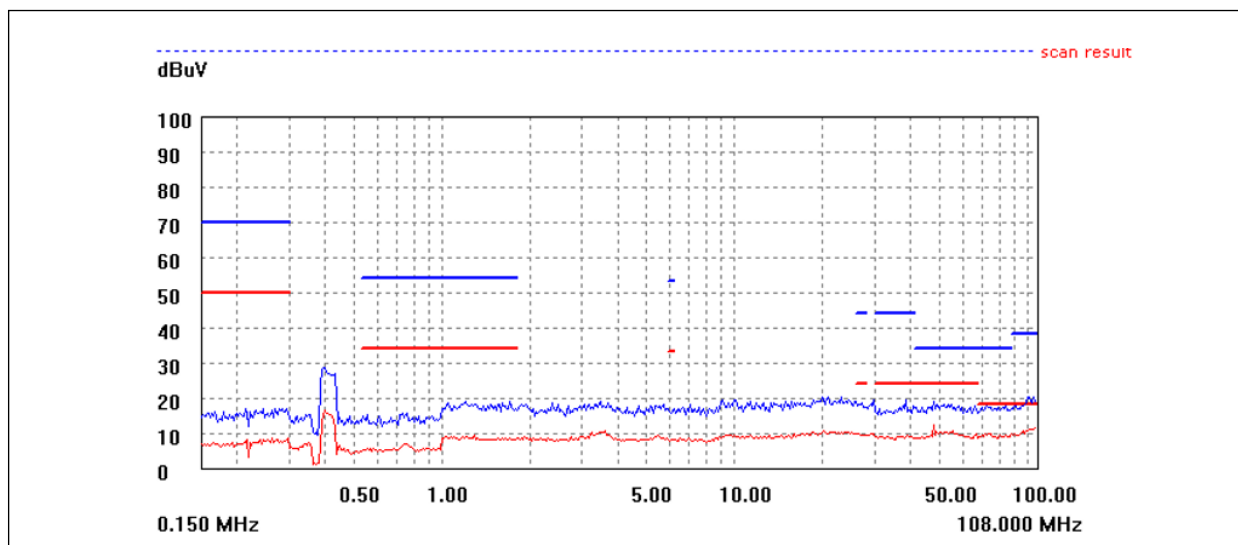


Figure 9 CISPR-25 Class 5 Conducted EMI Scan (GND)

Copyright © 2024 Lumissil Microsystems. All rights reserved. Lumissil Microsystems reserves the right to make changes to this specification and its products at any time without notice. Lumissil Microsystems assumes no liability arising out of the application or use of any information, products or services described herein. Customers are advised to obtain the latest version of this device specification before relying on any published information and before placing orders for products.

Lumissil Microsystems does not recommend the use of any of its products in life support applications where the failure or malfunction of the product can reasonably be expected to cause failure of the life support system or to significantly affect its safety or effectiveness. Products are not authorized for use in such applications unless Lumissil Microsystems receives written assurance to its satisfaction, that:

- the risk of injury or damage has been minimized;
- the user assume all such risks; and
- potential liability of Lumissil Microsystems is adequately protected under the circumstances

IS32PM3420A DEMO BOARD GUIDE

REVISION HISTORY

Revision	Detail Information	Date
A	Initial release	2024.08.08